

COVID-19:

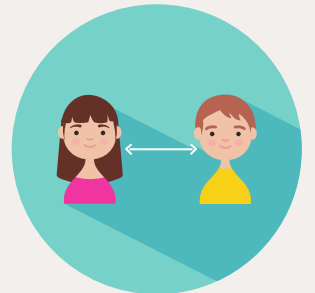
Community Transmission Status
HIGH



Masks required
(over age of 2) for all
gatherings.



**Small Indoor
Groups of 10
OKAY!**



Maintain social
distancing for all
gatherings.



Food/drink allowed in
small indoor groups and
all outdoor gatherings.

Outdoor gatherings
encouraged!



Live music (instrumental, small
group of masked singers) in
building allowed for Sunday
Services.



Only those with a role
may be in building for
Sunday Services.



Sunday Service volunteer
needs determined by
Wednesday each week.



We ask that all persons eligible
for vaccination be vaccinated
prior to attending our
programming.



- *Meetings at the fellowship building must also follow other requirements about reserving space, cleaning up, using ventilation.
- *Planning for indoor activities should incorporate multi-platform options for those who wish to attend virtually.
- *Those who come to the building for meetings should notify Heather prior to arriving at the building.
- *Indoor small groups should follow consent and discuss in covenantal relationship decisions around masking (when not in building), vaccination status and eating/drinking.
- *Staff and volunteers in our RE and nursery program must be vaccinated. A copy of the staff/volunteer's vaccination card must be provided when the background check is submitted.